

## Request for Proposal – Water Loss Control: Leak Detection

### RFPQ Answers to submitted questions

1. Can you provide a breakdown of the 3,400 mi of water main:
  - a. What type of pipe material do you have in your system?

Material	Length (ft)	Length (Miles)
AC	1597793.5	302.61
BR	101	0.02
CI	6258321.7	1185.29
CONC	670.39	0.13
CU	28026.5	5.31
DI	8917410.4	1688.90
ECP	364.02	0.07
GAL	52235.58	9.89
HDPE	46561.585	8.82
LCP	1951.04	0.37
PCCP	256966.77	48.67
PE	17365.74	3.29
PVC	1081436.7	204.82
PVCO	18191.48	3.45
STL	133723.05	25.33
Unknown	53912.15	10.21
Totals	18465032	3497.17

- b. How many miles of each type? *See above chart under 1a*
  - c. Can you separate the mileage of Transmission main (pipe  $\geq 16$ " dia) from Distribution main (pipe  $< 16$ " dia)

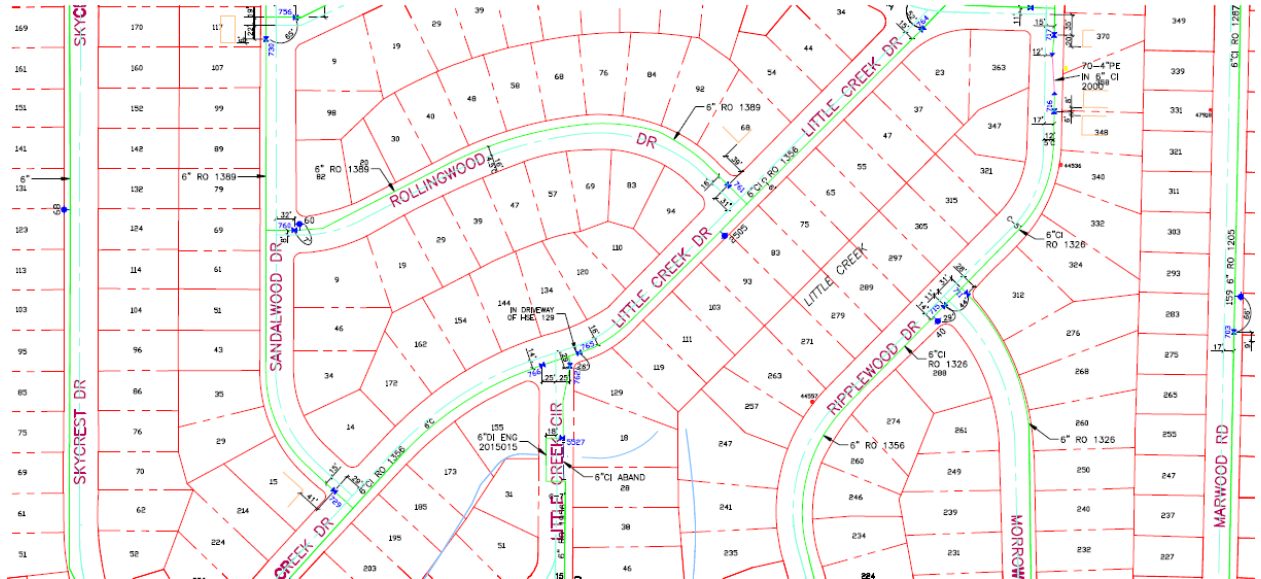
Diameter	Length (ft)	Length (Miles)
0-14	16755407.79	3173.37
16-60	1709623.90	323.79
Totals	18465031.69	3497.17

- d. How far apart of your fire hydrants placed? (Typically) **500-600 feet**
2. Is the Authority willing to divide up the work between the survey and the on-call (emergency response) services if it benefits them? **Yes – please refer to the RFPQ, these are 2 separate items.**
3. Is the Authority willing to extend the on-call response time to 3-4hrs? **No**
4. RFP calls for Professional Liability (E&O) coverage. Is the Authority willing to waive this requirement? **No**

# Request for Proposal – Water Loss Control: Leak Detection

## RFPQ Answers to submitted questions

5. Is the Authority willing to share a sample pdf of the water system for reference?



6. Is there a publicly available bid tab and/or proposal evaluation for 2024? **No**
7. Approximately, what was the water loss percentage for the previous water loss control program? **For 2025, 13.05 mgd (or 20.5%) for Non-Billable Water, which also includes water used firefighting, flushing, and maintenance (estimates) in addition to leaks.**
8. Does every gate valve within the project scope need to be leak tested? **Yes**
9. What is the estimated volume of unaccounted-for water associated with this system? **For 2025, 13.05 mgd (or 20.5%) for Non-Billable Water, which also includes water used firefighting, flushing, and maintenance (estimates) in addition to leaks.**
10. Does this project fall under prevailing wage requirements? **No**
11. Can you provide additional clarification regarding after-hours and weekend work requirements? Specifically, will there be an expectation for personnel to remain on call 24/7 for the duration of the contract?

- An on-call leak detection service shall require a 90 minute on-site response time over the full length of the contract on a 24 hour/day, 7 days/week, and 365 day/year basis. The amount of on call detection service requests will vary on a year to year basis based on actual needs.
- The Professional will be paid a 3 hour fee/case, plus actual additional hours worked for each on call occurrence.

12. Will access to private customer properties be permitted for the purpose of leak testing curb valves? **Should not be necessary.**
13. Who will be responsible for providing and managing traffic control if it becomes necessary during the course of the work? **The proposer will be responsible and not MCWA.**