

How to Identify Your Water Service Line Material



What you'll need:



Magnet



Coin

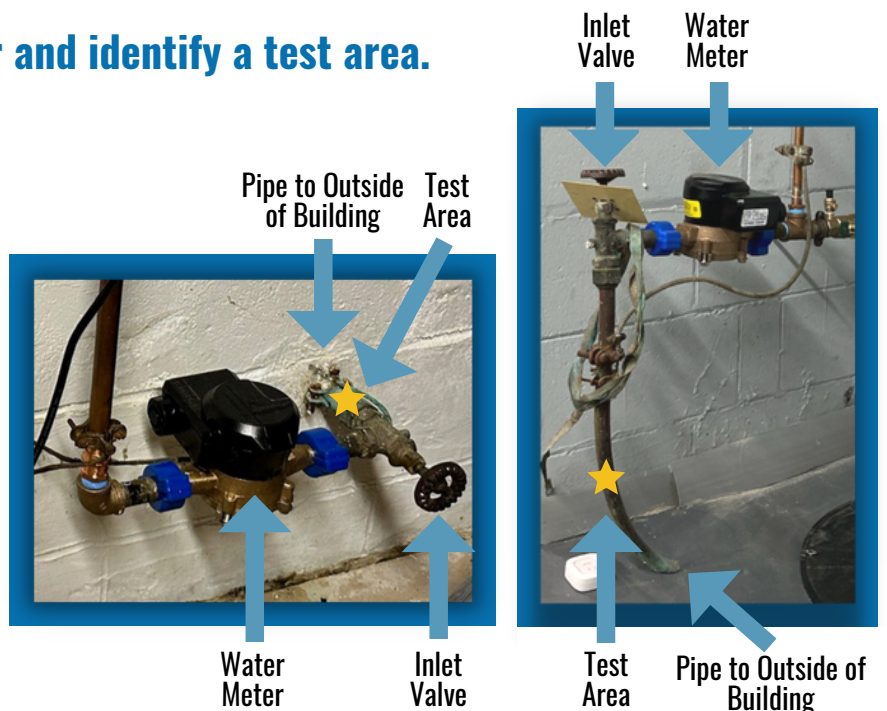


Flashlight

1

Locate your water meter and identify a test area.

The water meter is typically located in the basement or lower level on the front wall that faces the street. Most meters have an arrow that indicates flow direction. Locate the point where the water service line enters the wall or floor. Your test area should be between that point and the inlet valve. Expose a small area of the pipe if it is covered or wrapped.



2

Apply a magnet to the pipe.

Does the magnet stick to the pipe? If yes, it is likely galvanized steel.

3

Perform scratch test.

Use a coin to **gently** scratch the pipe. Remove any corrosion that may have built up on the outside of the pipe.



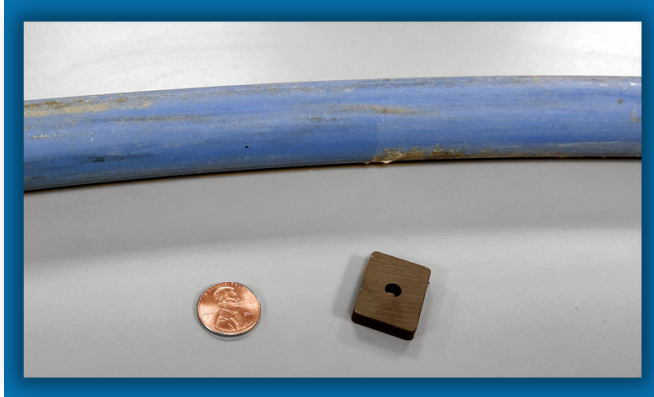
4

Identify the material.



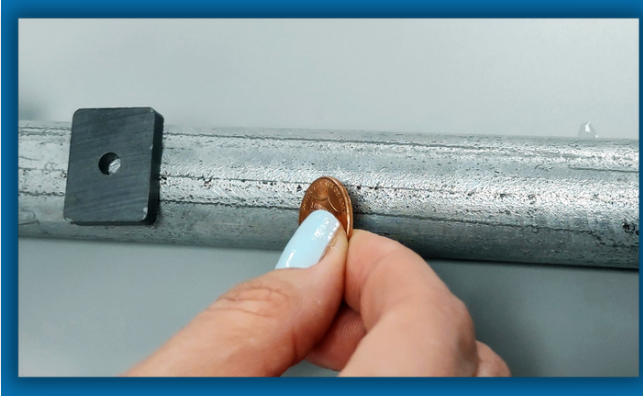
COPPER

Color: Copper
Magnetic: No



PLASTIC

Color: Blue, black, white or gray
Magnetic: No



GALVANIZED STEEL

Color: Dull gray
Magnetic: Yes



LEAD

Color: Shiny silver
Magnetic: No

5

Take a photo and submit your results.

Submit your results at www.mcwa.com/service-line-material-form, including a photo of your scratch-tested water service line.

